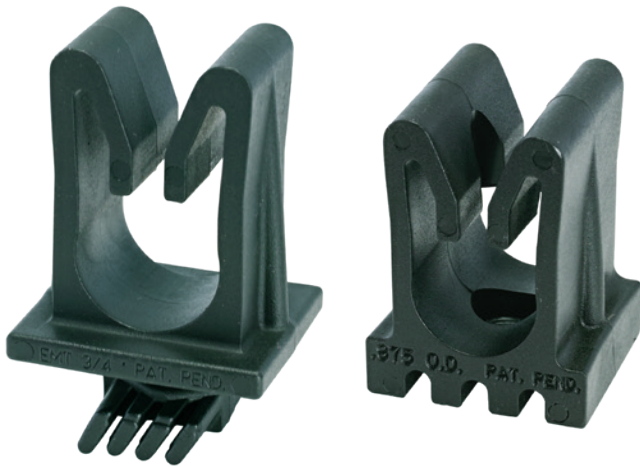




CUSH-A-CLAW®

STRUT OR SURFACE MOUNT TO MEET ALL YOUR TUBE, PIPE, OR HOSE APPLICATIONS



Pipe & Conduit Support

- Easy Snap-in Installation of Tube, Pipe, or Hose
- Saves Time and Money
- An Excellent Alternative to Steel, Stainless Steel, or Galvanized Clamps
- Temperature range:
-50°F to +275°F (-45°C to +135°C)

Properly Supports Pipe and Tube

- Will not rust, Non-Conducting
- Sure Grip Strut Base easily rotates into strut
- Works Great Indoors or Outdoors
- Seven Sizes of Tube and Three Sizes of EMT
- Designed for Light Duty Loads and Applications

75 Lbs. Load
(safety factor 3)



Cush-A-Claw® is manufactured under U.S. patent #D631739, #D679177, and European Community patent #0011520030001, #0011520030002, #0011520030003, #0011520030004, #0011520030005, #0011520030006, #0011520030007

ZSIINC.COM | 800-323-7053

ZSi & Wesanco are part of the Ideal Tridon Group. Learn more at idealtridongroup.com





Strut Mounted

Insert	Twist & Lock	Position Pipe	Snap In



Surface Mounted

Position	Mount w/Screw	Position Pipe	Snap In
Side grooves provide Centering guide		Counter-sunk hole allows tightening of any type of #10 fastener	

Strut Mounted

Part No.	O.D. Tube Size		Part No.	EMTS Conduit Sizes	
	O.D.	In.		O.D.	In.
CL-04	1/4"	0.250	EMT-1/2	1/2"	0.706
CL-06	3/8"	0.375	EMT-3/4	3/4"	0.922
CL-08	1/2"	0.500	EMT-1	1"	1.163
CL-10	5/8"	0.625			
CL-12	3/4"	0.750			
CL-14	7/8"	0.875			
CL-18	1 1/8"	1.125			



Surface Mounted

Part No.	O.D. Tube Size		Box Qty	Part No.	EMTS Conduit Sizes		Box Qty
	O.D.	In.			O.D.	In.	
CLS-04	1/4"	0.250	50	EMTS-1/2	1/2"	0.706	25
CLS-06	3/8"	0.375	50	EMTS-3/4	3/4"	0.922	25
CLS-08	1/2"	0.500	50	EMTS-1	1"	1.163	20
CLS-10	5/8"	0.625	25				
CLS-12	3/4"	0.750	25				
CLS-14	7/8"	0.875	25				
CLS-18	1 1/8"	1.125	20				

