



CUSH-A-NATOR®

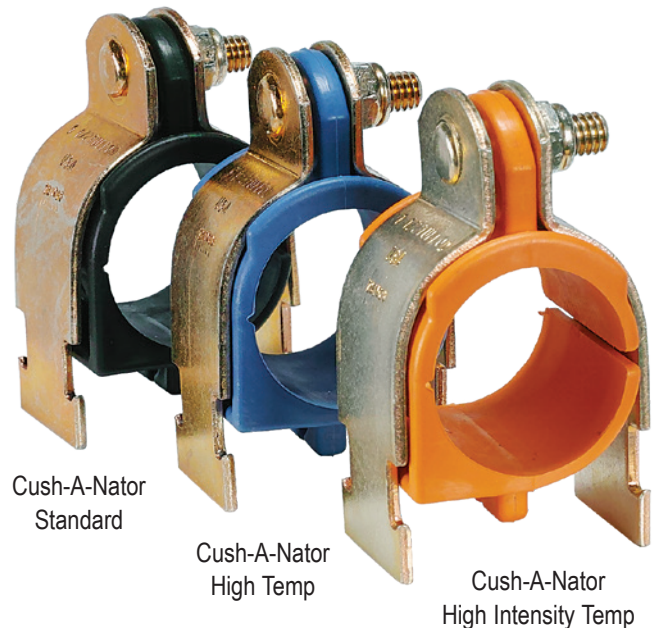
FOR NEW AND RETROFIT APPLICATIONS



Featuring Cush-A-Nator High Intensity Temp. has a service temperature of -65°F to 400°F (-53°C to 204°C)

Supports Pipe & Tube

- Fastest for Installation and Rework
- Cushion Rotates into Place Without Moving Pipe
- Controlled Squeeze Prevents Over-tightening
- Excellent Protection from Vibration
- Standard has Service Temp. of -50°F to 275°F (-45°C to 135°C)
- High Temp has a Service Temp. of -65°F to 340°F (-53°C to 170°C)

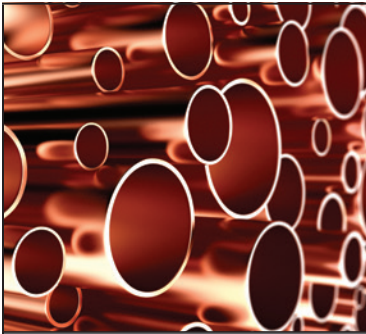


Cush-A-Nator® is manufactured under U.S. patents #9074715, #D702113, #D710190, and European Community patents #0013843410001, #0013843410002, and a United Kingdom patent pending

Wesanco-ZSi.com | 800-323-7053

ZSi & Wesanco are part of the Ideal Tridon Group. Learn more at idealtridongroup.com





**-50°F to 275°F
(-45°C to 135°C)**



**-65°F to 340°F
(-53°C to 170°C)**



**-65°F to 400°F
(-53°C to 204°C)**

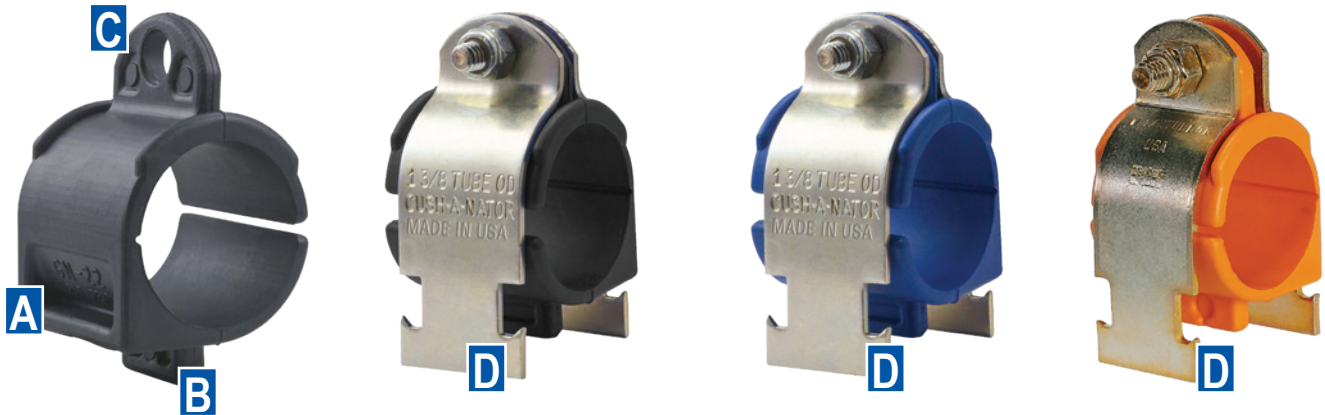
Tube Sizes			(CN) Cush-A-Nator® Standard			Cush-A-Nator® (HT) High Temp			Cush-A-Nator® (HIT) High Intensity Temp		
O.D. Tube Size	Polypropylene (PP-R) Pipe Size		Tube - Part No.			Tube - Part No.			Tube - Part No.		
			Steel	SS304	SS316	Steel	SS304	SS316	Steel	SS304	SS316
1/4"	0.25" (6mm)	-	CN04	CN04SS	CN04S6	HT04	HT04SS	HT04S6	HIT04	HIT04SS	HIT04S6
3/8"	0.37" (9mm)	-	CN06	CN06SS	CN06S6	HT06	HT06SS	HT06S6	HIT06	HIT06SS	HIT06S6
1/2"	0.50" (13mm)	-	CN08	CN08SS	CN08S6	HT08	HT08SS	HT08S6	HIT08	HIT08SS	HIT08S6
5/8"	0.62" (16mm)	-	CN10	CN10SS	CN10S6	HT10	HT10SS	HT10S6	HIT10	HIT10SS	HIT10S6
3/4"	0.75" (19mm)	●	CN12	CN12SS	CN12S6	HT12	HT12SS	HT12S6	HIT12	HIT12SS	HIT12S6
7/8"	0.87" (22mm)	-	CN14	CN14SS	CN14S6	HT14	HT14SS	HT14S6	HIT14	HIT14SS	HIT14S6
1"	1.00" (25mm)	●	CN16	CN16SS	CN16S6	HT16	HT16SS	HT16S6	HIT16	HIT16SS	HIT16S6
1 1/8"	1.12" (28mm)	-	CN18	CN18SS	CN18S6	HT18	HT18SS	HT18S6	HIT18	HIT18SS	HIT18S6
1 1/4"	1.25" (32mm)	-	CN20	CN20SS	CN20S6	HT20	HT20SS	HT20S6	HIT20	HIT20SS	HIT20S6
-	32mm	●	CN32M	CN32MSS	CN32MS6	HT32M	HT32MSS	HT32MS6	HIT32M	HIT32MSS	HIT32MS6
1 3/8"	1.37" (35mm)	-	CN22	CN22SS	CN22S6	HT22	HT22SS	HT22S6	HIT22	HIT22SS	HIT22S6
1 1/2"	1.50" (38mm)	-	CN24	CN24SS	CN24S6	HT24	HT24SS	HT24S6	HIT24	HIT24SS	HIT24S6
1 5/8"	1.62" (41mm)	●	CN26	CN26SS	CN26S6	HT26	HT26SS	HT26S6	HIT26	HIT26SS	HIT26S6
1 3/4"	1.75" (45mm)	-	CN28	CN28SS	CN28S6	HT28	HT28SS	HT28S6	HIT28	HIT28SS	HIT28S6
1 7/8"	1.87" (48mm)	-	CN30	CN30SS	CN30S6	HT30	HT30SS	HT30S6	HIT30	HIT30SS	HIT30S6
2"	2.00" (51mm)	●	CN32	CN32SS	CN32S6	HT32	HT32SS	HT32S6	HIT32	HIT32SS	HIT32S6
2 1/8"	2.12" (54mm)	-	CN34	CN34SS	CN34S6	HT34	HT34SS	HT34S6	HIT34	HIT34SS	HIT34S6
2 1/4"	2.25" (57mm)	-	CN36	CN36SS	CN36S6	HT36	HT36SS	HT36S6	HIT36	HIT36SS	HIT36S6
2 3/8"	2.37" (60mm)	-	CN38	CN38SS	CN38S6	HT38	HT38SS	HT38S6	HIT38	HIT38SS	HIT38S6
2 1/2"	2.50" (64mm)	●	CN40	CN40SS	CN40S6	HT40	HT40SS	HT40S6	HIT40	HIT40SS	HIT40S6
2 5/8"	2.62" (66mm)	-	CN42	CN42SS	CN42S6	HT42	HT42SS	HT42S6	HIT42	HIT42SS	HIT42S6
2 7/8"	2.87" (73mm)	-	CN46	CN46SS	CN46S6	HT46	HT46SS	HT46S6	HIT46	HIT46SS	HIT46S6
-	75mm	●	CN75M	CN75MSS	CN75MS6	HT75M	HT75MSS	HT75MS6	HIT75M	HIT75MSS	HIT75MS6
3"	3.00" (76mm)	-	CN48	CN48SS	CN48S6	HT48	HT48SS	HT48S6	HIT48	HIT48SS	HIT48S6
3 1/8"	3.12" (79mm)	-	CN50	CN50SS	CN50S6	HT50	HT50SS	HT50S6	HIT50	HIT50SS	HIT50S6
3 1/2"	3.50" (89mm)	-	CN56	CN56SS	CN56S6	HT56	HT56SS	HT56S6	HIT56	HIT56SS	HIT56S6
-	90mm	●	CN90M	CN90MSS	CN90MS6	HT90M	HT90MSS	HT90MS6	HIT90M	HIT90MSS	HIT90MS6
4"	4.00" (102mm)	-	CN64	CN64SS	CN64S6	HT64	HT64SS	HT64S6	HIT64	HIT64SS	HIT64S6
4 1/8"	4.12" (105mm)	-	CN66	CN66SS	CN66S6	HT66	HT66SS	HT66S6	HIT66	HIT66SS	HIT66S6
-	110mm	●	CN110M	CN110MSS	CN110MS6	HT110M	HT110MSS	HT110MS6	HIT110M	HIT110MSS	HIT110MS6
4 1/2"	4.50" (114mm)	-	CN72	CN72SS	CN72S6	HT72	HT72SS	HT72S6	HIT72	HIT72SS	HIT72S6
-	125mm	●	CN125M	CN125MSS	CN125MS6	HT125M	HT125MSS	HT125MS6	HIT125M	HIT125MSS	HIT125MS6
6"	6.00" (152mm)	-	CN96	CN96SS	CN96S6	HT96	HT96SS	HT96S6	HIT96	HIT96SS	HIT96S6
-	160mm	●	CN160M	CN160MSS	CN160MS6	HT160M	HT160MSS	HT160MS6	HIT160M	HIT160MSS	HIT160MS6

Contact Factory for Additional Sizes

			-50°F to 275°F (-45°C to 135°C)			-65°F to 340°F (-53°C to 170°C)			-65°F to 400°F (-53°C to 204°C)		
Pipe Sizes			(CN) Cush-A-Nator® Standard			Cush-A-Nator® (HT) High Temp			Cush-A-Nator® (HIT) High Intensity Temp		
O.D. Tube Size		Polypropylene (PP-R) Pipe Size	Pipe - Part No.			Pipe - Part No.			Pipe - Part No.		
			Steel	SS304	SS316	Steel	SS304	SS316	Steel	SS304	SS316
1/2"	0.840" (21mm)	-	CN14P	CN14PSS	CN14PS6	HT14P	HT14PSS	HT14PS6	HIT14P	HIT14PSS	HIT14PS6
3/4"	1.050" (27mm)	-	CN17P	CN17PSS	CN17PS6	HT17P	HT17PSS	HT17PS6	HIT17P	HIT17PSS	HIT17PS6
1"	1.315" (33mm)	-	CN21P	CN21PSS	CN21PS6	HT21P	HT21PSS	HT21PS6	HIT21P	HIT21PSS	HIT21PS6
1 1/2"	1.900" (48mm)	-	CN30P	CN30PSS	CN30PS6	HT30P	HT30PSS	HT30PS6	HIT30P	HIT30PSS	HIT30PS6
2"	2.375" (60mm)	-	CN38P	CN38PSS	CN38PS6	HT38P	HT38PSS	HT38PS6	HIT38P	HIT38PSS	HIT38PS6
2 1/2"	2.875" (73mm)	-	CN46P	CN46PSS	CN46PS6	HT46P	HT46PSS	HT46PS6	HIT46P	HIT46PSS	HIT46PS6
3"	3.500" (89mm)	-	CN56P	CN56PSS	CN56PS6	HT56P	HT56PSS	HT56PS6	HIT56P	HIT56PSS	HIT56PS6
3 1/2"	4.000" (102mm)	-	CN64P	CN64PSS	CN64PS6	HT64P	HT64PSS	HT64PS6	HIT64P	HIT64PSS	HIT64PS6
4"	4.500" (114mm)	-	CN72P	CN72PSS	CN72PS6	HT72P	HT72PSS	HT72PS6	HIT72P	HIT72PSS	HIT72PS6

Contact Factory for Additional Sizes

The Cush-A-Nator® cushion is manufactured in the United States and made from a new incredibly durable thermoplastic rubber that resists extreme temperatures and provides longer life against vibration fatigue. The Cush-A-Nator® is made from a proprietary thermoplastic vulcanized material cross-linked with high performance rubber and thermoplastic elastomers, which produces the highest operating temperature range in the industry.



Features

A Thumb Drive

The Cush-A-Nator® has the exclusive "Thumb Drive" that provides the installer a gripping point to easily open the cushion with the help of leverage tabs and a living hinge. Effortless installation.

B Self-Alignment

Cushion can be opened and placed over the pipe or tube and rotated into place while on the channel and automatically aligned with the channel opening ready for clamping.

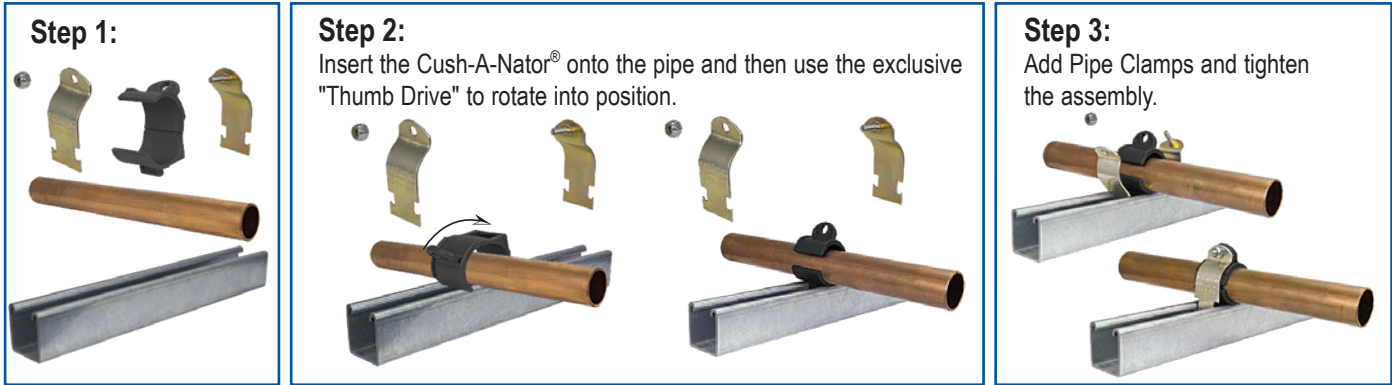
C Pressure Control

The Cush-A-Nator® cushion has a built in squeeze control as part of the cushion design. The side opening and the squeeze control tab provides evenly distributed pressure around the tube or pipe.

D Complete Clamping Unit

The Cush-A-Nator® is the only strut mounted cushion that is mechanically connected to the supporting steel clamp because the bolt passes through the squeeze control tab forming the single unit connection. This design helps prevent the cushion from excess vibration by being attached directly to the clamp.

Cush-A-Nator® – New Installations



Cush-A-Nator® – Retrofit / Replacement Applications

A key feature of the Cush-A-Nator® is this ability to place the cushion and rotate into position. **Perfect for retrofit applications!**

Retrofit - The Common Problem

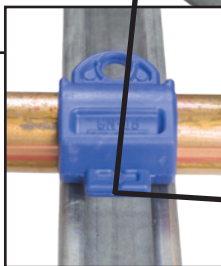
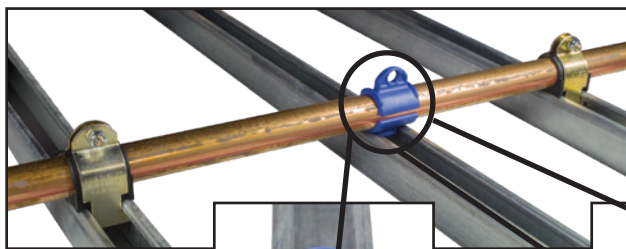
Replacing a cushion within a long pipe run poses a problem. Clamps before and after the one to be replaced prohibit the pipe from being raised so that the new cushion can be installed correctly. All too often a work-around is used which compromises the connection.

Retrofit - The Perfect Solution

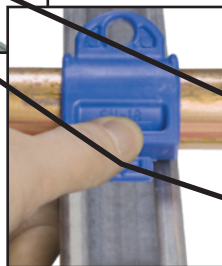
Step 1: Remove Bad Cushion.



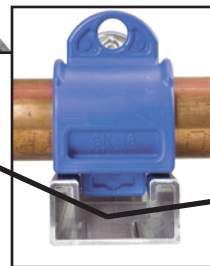
Step 3: Rotated into place, the Self-Alignment tab automatically aligns with the channel opening ready for clamping.



Rotate into Position

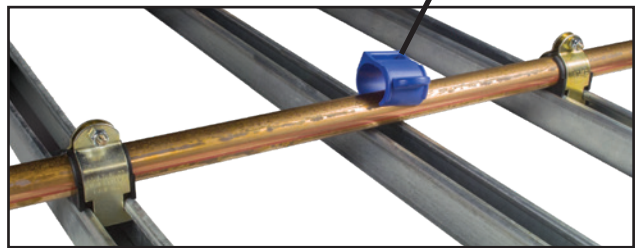


Thumb Drive



"Self-Alignment"

Step 2: The Cush-A-Nator can be installed without raising the pipe. The unique "Thumb Drive" allows you to rotate the Cush-A-Nator into position.



Step 4: Add Pipe Clamps and tighten the assembly.



Wesanco-ZSi.com | 800-323-7053

ZSi & Wesanco are part of the Ideal Tridon Group. Learn more at idealtridongroup.com

© Copyright 2024 Ideal Tridon Group / Printed & Designed in the USA / 11-24

