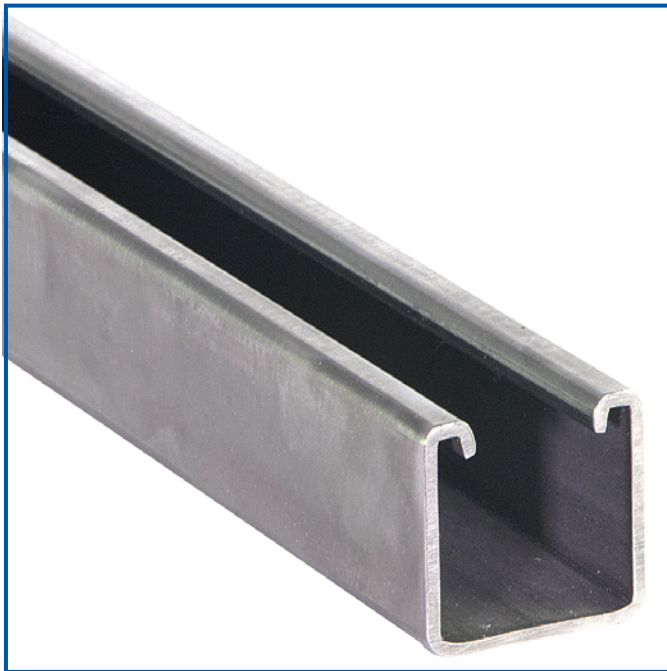




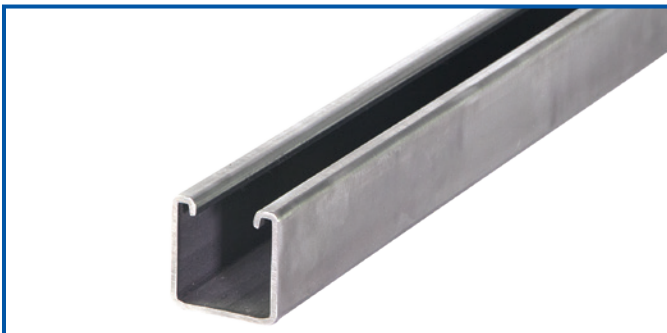
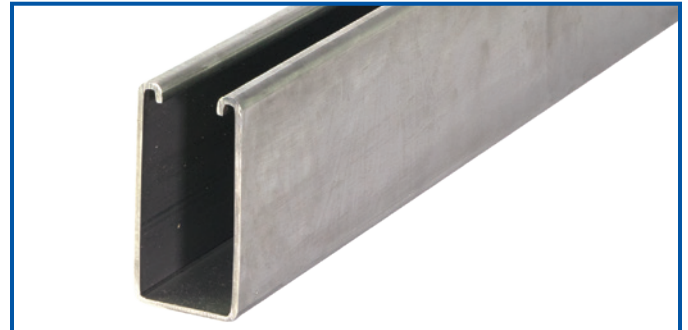
## PRE-CUT CHANNEL

DOMESTIC ROLLED CHANNEL IN-STOCK



### Made in USA

- Solid, Slotted, and Combination Strut
- Wide Range of Materials and Finishes
- In-Stock Shipping from Multiple Warehouses
- Steel, Stainless Steel, & Aluminum



**Cut Strut Size Range: 6", 12", 18", 24", 30", 36", 42", 48", 54", 60", 72", 80", 96", 10', & 20'**

[Wesanco-ZSi.com](http://Wesanco-ZSi.com) | 800-323-7053

ZSi & Wesanco are part of the Ideal Tridon Group. Learn more at [idealtridongroup.com](http://idealtridongroup.com)



### General Information

Most channels are produced in 10 and 20-foot lengths with a length tolerance of plus or minus 1/16".

W600 and W700 are produced in 10 foot lengths only.

### Channels

#### General

Channels are manufactured by the cold roll forming process which produces cross sections of uniform dimensions within tolerances established by the Metal Framing Manufacturer's Association, Metal Framing Standards Publication No. MFMA-1.

#### Material

Steel used in the manufacture of channels conforms to the ASTM specifications in this catalog.

#### Design

Design is based on AISI S100-2016 "Specification for the Design of Cold-Formed Steel Structural Members." Maximum bending stress used in design is 25,000 pounds per square inch (PSI). This is based upon a virgin steel minimum yield stress of 33,000 psi cold worked to an average yield stress of 42,000 psi.

#### Welding

Welds meet the performance requirements of section 4 of AISI S100-2016 "Specification for the design of Cold-Formed Steel Structural Members." All multiple sections of two or more single channels are resistance spot-welded approximately 2" to 3" on center.

### Finishes

#### Electroplated Zinc or Electro-Galvanized (EG)

This coating is standard for most Wesanco products. Electro-Galvanized products meet ASTM B633 SC1 or SC3, Type III. Electroplating deposits zinc on the surface of the steel by electrolysis from a bath of zinc salts. The thickness of zinc applied in this method is between 0.2 mils to 0.5 mils [5.1 µm to 12.7 µm].

#### Mill-Galvanized (Pre-Galvanized) (PG)

ASTM A653 G-90 Pre-galvanized zinc is produced by continuously rolling steel coils or sheets through molten zinc at the mills. The coils are slit to size and fabricated by forming, shearing or punching to produce the finished product. During fabrication cut edges are not generally zinc coated. However, the zinc near the uncoated metal becomes a sacrificial anode to protect the bare areas.

#### Paint-Green Powder Coating (GR)

A dark green low gloss powder coating is applied and thoroughly baked after steel has been cleaned and phosphatized.

#### Hot Dip Galvanized After Fabrication (HG)

Channel and fittings which are hot dip galvanized after fabrication conform to one of the following specifications. ASTM A 123, ASTM A153 or ASTM A386.

#### Special Coatings

Other commercially available finishes can be supplied per specification when required to protect applications.

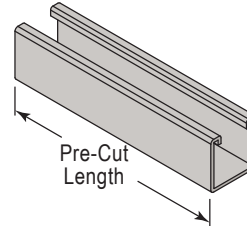
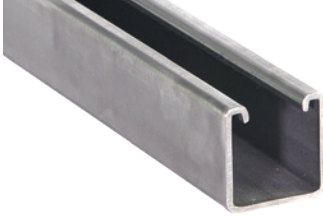
Channel Finish or Material Order Codes			
Material/Finish	Material/Finish Codes	Description	
Hot Rolled: Channel	A 1011SS GR33	Hot rolled carbon steel sheet and strip, structural quality.	
Cold Rolled: Channel	A 1008SS GR33	Cold rolled carbon sheet steel.	
Electroplated	<b>EG</b>	Fittings and hardware supplied as "Electro-Galvanized" in accordance with ASTM B 633.	
Mill-Galvanized (Pre-Galvanized)	<b>PG</b>	Galvanized steel used in the manufacture of channel sections conforms to A 653 SS GR33 Uncoated edges resulted from slitting, punching and channel cut off are present.	
Hot Dip Galvanized	<b>HG</b>	Channel and fittings which are hot dip galvanized after fabrication.	
Paint-Green Powder Coating	<b>GR</b>	A dark green low gloss powder coating is applied and thoroughly baked after steel has been cleaned and phosphatized.	
Silva-Guard: Spring Steel	<b>SG</b>	Approved for outdoor as well as indoor applications. It is a chrome free duplex coating system that combines an inorganic zinc-rich basecoat with an aluminum-rich organic topcoat.	
Plain	<b>PL</b>	Other commercially available finishes can be supplied per specification when required to protect applications.	
Special Coatings	<b>GOLD</b>	Yellow dichromate is applied over the zinc. This results in a yellowish gold colored appearance and creates a nonporous barrier sealant that is resistant to corrosion and can be painted.	
Stainless Steel: Channel	A 240 Type 304	<b>S4</b>	Heat resisting chromium and chromium-nickel stainless steel plate, sheet, strip for pressure vessel.
	A 240 Type 316		
Aluminum: Channel	<b>AL</b>	Aluminum alloy extruded bar, rod, wire, shape and tube. B 221 TYPE 6063 T6	

# W200 Pre-Cut Channel



12 Gauge - 1<sup>5</sup>/<sub>8</sub>" x 1<sup>5</sup>/<sub>8</sub>" (41mm x 41mm)

## W200: 1<sup>5</sup>/<sub>8</sub>" x 1<sup>5</sup>/<sub>8</sub>" (41mm x 41mm) - Solid Channel - Pre-Cut Lengths



W200 - 1<sup>5</sup>/<sub>8</sub>" x 1<sup>5</sup>/<sub>8</sub>" - 12 Gauge - Solid Channel

Pre-Cut Length	Pre-Galvanized Steel - PG	Stainless Steel Type 304 - S4	Stainless Steel Type 316 - S6
6" (15.2cm)	W200PG6IN	W200S46IN	W200S66IN
12" (0.31m)	W200PG12IN	W200S412IN	W200S612IN
18" (0.45m)	W200PG18IN	W200S418IN	W200S618IN
24" (0.61m)	W200PG24IN	W200S424IN	W200S624IN
30" (0.76m)	W200PG30IN	W200S430IN	W200S630IN
36" (0.91m)	W200PG36IN	W200S436IN	W200S636IN
42" (1.07m)	W200PG42IN	W200S442IN	W200S642IN
48" (1.22m)	W200PG48IN	W200S448IN	W200S648IN
54" (1.37m)	W200PG54IN	W200S454IN	W200S654IN
60" (1.52m)	W200PG60IN	W200S460IN	W200S660IN
72" (1.83m)	W200PG72IN	W200S472IN	W200S672IN
80" (2.03m)	W200PG80IN	W200S480IN	W200S680IN
96" (2.44m)	W200PG96IN	W200S496IN	W200S696IN
10' (3.05m)	W200PG10	W200S410	W200S610
20' (6.10m)	W200PG20	W200S420	W200S620

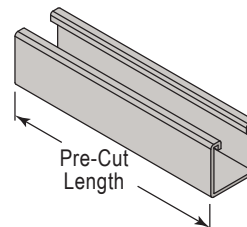
Note: Minimum order quantity is 100 pieces for any size under 10'.

## W200EH: 1<sup>5</sup>/<sub>8</sub>" x 1<sup>5</sup>/<sub>8</sub>" (41mm x 41mm) - Channel with Short Slots - Pre-Cut Lengths



### Channel With Short Slots

9/16" x 1-1/8" (14mm x 29mm) slots  
are punched on 2" (51mm) centers.



W200EH - 1<sup>5</sup>/<sub>8</sub>" x 1<sup>5</sup>/<sub>8</sub>" - 12 Gauge - Channel with Short Slots

Pre-Cut Length	Pre-Galvanized Steel - PG	Stainless Steel Type 304 - S4	Stainless Steel Type 316 - S6
6" (15.2cm)	W200EHPG6IN	W200EHS46IN	W200EHS66IN
12" (0.31m)	W200EHPG12IN	W200EHS412IN	W200EHS612IN
18" (0.45m)	W200EHPG18IN	W200EHS418IN	W200EHS618IN
24" (0.61m)	W200EHPG24IN	W200EHS424IN	W200EHS624IN
30" (0.76m)	W200EHPG30IN	W200EHS430IN	W200EHS630IN
36" (0.91m)	W200EHPG36IN	W200EHS436IN	W200EHS636IN
42" (1.07m)	W200EHPG42IN	W200EHS442IN	W200EHS642IN
48" (1.22m)	W200EHPG48IN	W200EHS448IN	W200EHS648IN
54" (1.37m)	W200EHPG54IN	W200EHS454IN	W200EHS654IN
60" (1.52m)	W200EHPG60IN	W200EHS460IN	W200EHS660IN
72" (1.83m)	W200EHPG72IN	W200EHS472IN	W200EHS672IN
80" (2.03m)	W200EHPG80IN	W200EHS480IN	W200EHS680IN
96" (2.44m)	W200EHPG96IN	W200EHS496IN	W200EHS696IN
10' (3.05m)	W200EHPG10	W200EHS410	W200EHS610
20' (6.10m)	W200EHPG20	W200EHS420	W200EHS620

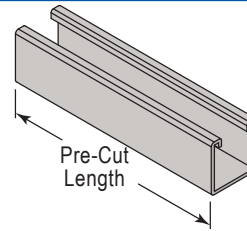
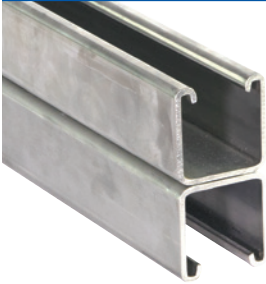
Note: Minimum order quantity is 100 pieces for any size under 10'.

Refer to Engineering Catalog for Beam & Column Loading Data of Solid, Back-to-Back, and Punched Channels

# W201 Pre-Cut Channel

12 Gauge - 1<sup>5</sup>/<sub>8</sub>" x 3<sup>1</sup>/<sub>4</sub>" (41mm x 83mm)

## W201: 1<sup>5</sup>/<sub>8</sub>" x 3<sup>1</sup>/<sub>4</sub>" (41mm x 83mm) - Solid Back-to-Back Channel - Pre-Cut Lengths



W201 - 1 <sup>5</sup> / <sub>8</sub> " x 3 <sup>1</sup> / <sub>4</sub> " - 12 Gauge Solid Back-to-Back Channel			
Pre-Cut Length	Pre-Galvanized Steel - PG	Stainless Steel Type 304 - S4	Stainless Steel Type 316 - S6
6" (15.2cm)	W201PG6IN	W201S46IN	W201S66IN
12" (0.31m)	W201PG12IN	W201S412IN	W201S612IN
18" (0.45m)	W201PG18IN	W201S418IN	W201S618IN
24" (0.61m)	W201PG24IN	W201S424IN	W201S624IN
30" (0.76m)	W201PG30IN	W201S430IN	W201S630IN
36" (0.91m)	W201PG36IN	W201S436IN	W201S636IN
42" (1.07m)	W201PG42IN	W201S442IN	W201S642IN
48" (1.22m)	W201PG48IN	W201S448IN	W201S648IN
54" (1.37m)	W201PG54IN	W201S454IN	W201S654IN
60" (1.52m)	W201PG60IN	W201S460IN	W201S660IN
72" (1.83m)	W201PG72IN	W201S472IN	W201S672IN
80" (2.03m)	W201PG80IN	W201S480IN	W201S680IN
96" (2.44m)	W201PG96IN	W201S496IN	W201S696IN
10' (3.05m)	W201PG10	W201S410	W201S610
20' (6.10m)	W201PG20	W201S420	W201S620

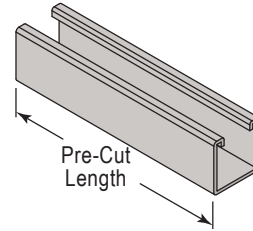
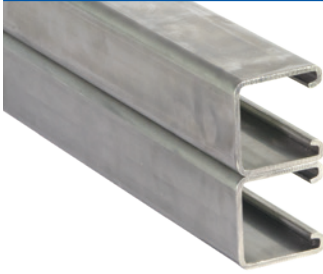
Note: Minimum order quantity is 100 pieces for any size under 10'.

# W202 Pre-Cut Channel



12 Gauge - 1<sup>5</sup>/<sub>8</sub>" x 3<sup>1</sup>/<sub>4</sub>" (41mm x 83mm)

## W202: 1<sup>5</sup>/<sub>8</sub>" x 3<sup>1</sup>/<sub>4</sub>" (41mm x 83mm) - Solid Side-to-Side Channel - Pre-Cut Lengths



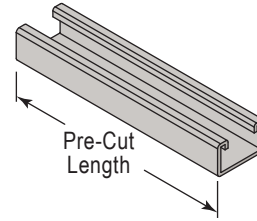
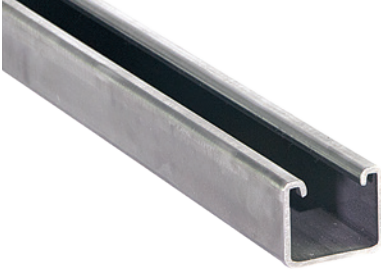
W202 - 1 <sup>5</sup> / <sub>8</sub> " x 3 <sup>1</sup> / <sub>4</sub> " - 12 Gauge Solid Side-to-Side Channel			
Pre-Cut Length	Pre-Galvanized Steel - PG	Stainless Steel Type 304 - S4	Stainless Steel Type 316 - S6
6" (15.2cm)	W202PG6IN	W202S46IN	W202S66IN
12" (0.31m)	W202PG12IN	W202S412IN	W202S612IN
18" (0.45m)	W202PG18IN	W202S418IN	W202S618IN
24" (0.61m)	W202PG24IN	W202S424IN	W202S624IN
30" (0.76m)	W202PG30IN	W202S430IN	W202S630IN
36" (0.91m)	W202PG36IN	W202S436IN	W202S636IN
42" (1.07m)	W202PG42IN	W202S442IN	W202S642IN
48" (1.22m)	W202PG48IN	W202S448IN	W202S648IN
54" (1.37m)	W202PG54IN	W202S454IN	W202S654IN
60" (1.52m)	W202PG60IN	W202S460IN	W202S660IN
72" (1.83m)	W202PG72IN	W202S472IN	W202S672IN
80" (2.03m)	W202PG80IN	W202S480IN	W202S680IN
96" (2.44m)	W202PG96IN	W202S496IN	W202S696IN
10' (3.05m)	W202PG10	W202S410	W202S610
20' (6.10m)	W202PG20	W202S420	W202S620

Note: Minimum order quantity is 100 pieces for any size under 10'.

# W800 Pre-Cut Channel

1<sup>5</sup>/<sub>8</sub>" x 1" (41mm x 25mm) - 12 Gauge

## W800: 1<sup>5</sup>/<sub>8</sub>" x 1" (41mm x 25mm) - Solid Channel - Pre-Cut Lengths



W800 - 1<sup>5</sup>/<sub>8</sub>" x 1" - 12 Gauge - Solid Channel

Pre-Cut Length	Pre-Galvanized Steel - PG	Stainless Steel Type 304 - S4	Stainless Steel Type 316 - S6
6" (15.2cm)	W800PG6IN	W800S46IN	W800S66IN
12" (0.31m)	W800PG12IN	W800S412IN	W800S612IN
18" (0.45m)	W800PG18IN	W800S418IN	W800S618IN
24" (0.61m)	W800PG24IN	W800S424IN	W800S624IN
30" (0.76m)	W800PG30IN	W800S430IN	W800S630IN
36" (0.91m)	W800PG36IN	W800S436IN	W800S636IN
42" (1.07m)	W800PG42IN	W800S442IN	W800S642IN
48" (1.22m)	W800PG48IN	W800S448IN	W800S648IN
54" (1.37m)	W800PG54IN	W800S454IN	W800S654IN
60" (1.52m)	W800PG60IN	W800S460IN	W800S660IN
72" (1.83m)	W800PG72IN	W800S472IN	W800S672IN
80" (2.03m)	W800PG80IN	W800S480IN	W800S680IN
96" (2.44m)	W800PG96IN	W800S496IN	W800S696IN
10' (3.05m)	W800PG10	W800S410	W800S610
20' (6.10m)	W800PG20	W800S420	W800S620

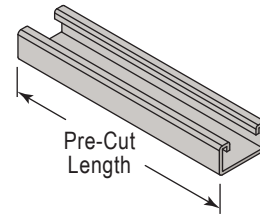
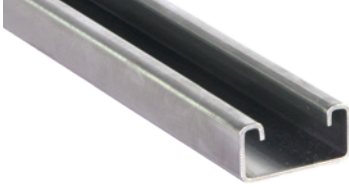
Note: Minimum order quantity is 100 pieces for any size under 10'.

# W900 Pre-Cut Channel



1<sup>5</sup>/<sub>8</sub>" x 7<sup>7</sup>/<sub>8</sub>" (41mm x 23mm) - 12 Gauge

## W900: 1<sup>5</sup>/<sub>8</sub>" x 7<sup>7</sup>/<sub>8</sub>" (41mm x 23mm) - Solid Channel - Pre-Cut Lengths



W900 - 1 <sup>5</sup> / <sub>8</sub> " x 7 <sup>7</sup> / <sub>8</sub> " - 12 Gauge - Solid Channel			
Pre-Cut Length	Pre-Galvanized Steel - PG	Stainless Steel Type 304 - S4	Stainless Steel Type 316 - S6
6" (15.2cm)	W900PG6IN	W900S46IN	W900S66IN
12" (0.31m)	W900PG12IN	W900S412IN	W900S612IN
18" (0.45m)	W900PG18IN	W900S418IN	W900S618IN
24" (0.61m)	W900PG24IN	W900S424IN	W900S624IN
30" (0.76m)	W900PG30IN	W900S430IN	W900S630IN
36" (0.91m)	W900PG36IN	W900S436IN	W900S636IN
42" (1.07m)	W900PG42IN	W900S442IN	W900S642IN
48" (1.22m)	W900PG48IN	W900S448IN	W900S648IN
54" (1.37m)	W900PG54IN	W900S454IN	W900S654IN
60" (1.52m)	W900PG60IN	W900S460IN	W900S660IN
72" (1.83m)	W900PG72IN	W900S472IN	W900S672IN
80" (2.03m)	W900PG80IN	W900S480IN	W900S680IN
96" (2.44m)	W900PG96IN	W900S496IN	W900S696IN
10' (3.05m)	W900PG10	W900S410	W900S610
20' (6.10m)	W900PG20	W900S420	W900S620

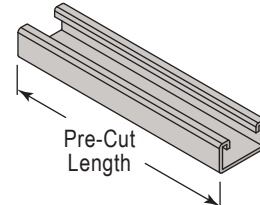
Note: Minimum order quantity is 100 pieces for any size under 10'.

## W900EH: 1<sup>5</sup>/<sub>8</sub>" x 7<sup>7</sup>/<sub>8</sub>" (41mm x 23mm) - Channel with Short Slots - Pre-Cut Lengths



### Channel With Short Slots

9/16" x 1-1/8" (14mm x 29mm) slots are punched on 2" (51mm) centers.



W900EH - 1 <sup>5</sup> / <sub>8</sub> " x 7 <sup>7</sup> / <sub>8</sub> " - 12 Gauge - Channel with Short Slots			
Pre-Cut Length	Pre-Galvanized Steel - PG	Stainless Steel Type 304 - S4	Stainless Steel Type 316 - S6
6" (15.2cm)	W900EHPG6IN	W900EHS46IN	W900EHS66IN
12" (0.31m)	W900EHPG12IN	W900EHS412IN	W900EHS612IN
18" (0.45m)	W900EHPG18IN	W900EHS418IN	W900EHS618IN
24" (0.61m)	W900EHPG24IN	W900EHS424IN	W900EHS624IN
30" (0.76m)	W900EHPG30IN	W900EHS430IN	W900EHS630IN
36" (0.91m)	W900EHPG36IN	W900EHS436IN	W900EHS636IN
42" (1.07m)	W900EHPG42IN	W900EHS442IN	W900EHS642IN
48" (1.22m)	W900EHPG48IN	W900EHS448IN	W900EHS648IN
54" (1.37m)	W900EHPG54IN	W900EHS454IN	W900EHS654IN
60" (1.52m)	W900EHPG60IN	W900EHS460IN	W900EHS660IN
72" (1.83m)	W900EHPG72IN	W900EHS472IN	W900EHS672IN
80" (2.03m)	W900EHPG80IN	W900EHS480IN	W900EHS680IN
96" (2.44m)	W900EHPG96IN	W900EHS496IN	W900EHS696IN
10' (3.05m)	W900EHPG10	W900EHS410	W900EHS610
20' (6.10m)	W900EHPG20	W900EHS420	W900EHS620

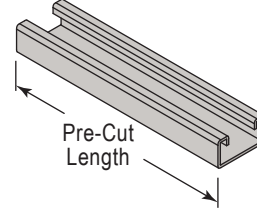
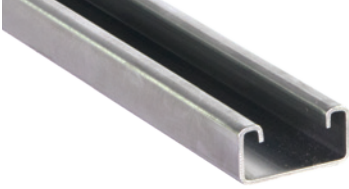
Note: Minimum order quantity is 100 pieces for any size under 10'.

Refer to Engineering Catalog for Beam & Column Loading Data of Solid, Back-to-Back, and Punched Channels

# W500 Pre-Cut Channel

1<sup>5</sup>/<sub>8</sub>" x 1<sup>3</sup>/<sub>16</sub>" (41mm x 21mm) - 14 Gauge

## W500: 1<sup>5</sup>/<sub>8</sub>" x 1<sup>3</sup>/<sub>16</sub>" (41mm x 21mm) - Solid Channel - Pre-Cut Lengths



W500 - 1<sup>5</sup>/<sub>8</sub>" x 1<sup>3</sup>/<sub>16</sub>" - 14 Gauge - Solid Channel

Pre-Cut Length	Pre-Galvanized Steel - PG	Stainless Steel Type 304 - S4	Stainless Steel Type 316 - S6
6" (15.2cm)	W500PG6IN	W500S46IN	W500S66IN
12" (0.31m)	W500PG12IN	W500S412IN	W500S612IN
18" (0.45m)	W500PG18IN	W500S418IN	W500S618IN
24" (0.61m)	W500PG24IN	W500S424IN	W500S624IN
30" (0.76m)	W500PG30IN	W500S430IN	W500S630IN
36" (0.91m)	W500PG36IN	W500S436IN	W500S636IN
42" (1.07m)	W500PG42IN	W500S442IN	W500S642IN
48" (1.22m)	W500PG48IN	W500S448IN	W500S648IN
54" (1.37m)	W500PG54IN	W500S454IN	W500S654IN
60" (1.52m)	W500PG60IN	W500S460IN	W500S660IN
72" (1.83m)	W500PG72IN	W500S472IN	W500S672IN
80" (2.03m)	W500PG80IN	W500S480IN	W500S680IN
96" (2.44m)	W500PG96IN	W500S496IN	W500S696IN
10' (3.05m)	W500PG10	W500S410	W500S610
20' (6.10m)	W500PG20	W500S420	W500S620

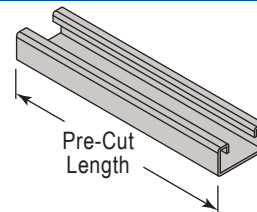
Note: Minimum order quantity is 100 pieces for any size under 10'.

## W500EH: 1<sup>5</sup>/<sub>8</sub>" x 1<sup>3</sup>/<sub>16</sub>" (41mm x 21mm) - Channel with Short Slots - Pre-Cut Lengths



### Channel With Short Slots

9/16" x 1-1/8" (14mm x 29mm) slots  
are punched on 2" (51mm) centers.



W500EH - 1<sup>5</sup>/<sub>8</sub>" x 1<sup>3</sup>/<sub>16</sub>" - 14 Gauge - Channel with Short Slots

Pre-Cut Length	Pre-Galvanized Steel - PG	Stainless Steel Type 304 - S4	Stainless Steel Type 316 - S6
6" (15.2cm)	W500EHPG6IN	W500EHS46IN	W500EHS66IN
12" (0.31m)	W500EHPG12IN	W500EHS412IN	W500EHS612IN
18" (0.45m)	W500EHPG18IN	W500EHS418IN	W500EHS618IN
24" (0.61m)	W500EHPG24IN	W500EHS424IN	W500EHS624IN
30" (0.76m)	W500EHPG30IN	W500EHS430IN	W500EHS630IN
36" (0.91m)	W500EHPG36IN	W500EHS436IN	W500EHS636IN
42" (1.07m)	W500EHPG42IN	W500EHS442IN	W500EHS642IN
48" (1.22m)	W500EHPG48IN	W500EHS448IN	W500EHS648IN
54" (1.37m)	W500EHPG54IN	W500EHS454IN	W500EHS654IN
60" (1.52m)	W500EHPG60IN	W500EHS460IN	W500EHS660IN
72" (1.83m)	W500EHPG72IN	W500EHS472IN	W500EHS672IN
80" (2.03m)	W500EHPG80IN	W500EHS480IN	W500EHS680IN
96" (2.44m)	W500EHPG96IN	W500EHS496IN	W500EHS696IN
10' (3.05m)	W500EHPG10	W500EHS410	W500EHS610
20' (6.10m)	W500EHPG20	W500EHS420	W500EHS620

Note: Minimum order quantity is 100 pieces for any size under 10'.

Refer to Engineering Catalog for Beam & Column Loading Data of Solid, Back-to-Back, and Punched Channels

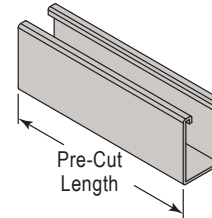
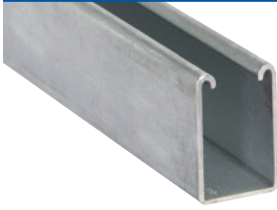


# W100 Pre-Cut Channel



12 Gauge - 1<sup>5</sup>/<sub>8</sub>" x 2<sup>7</sup>/<sub>16</sub>" (41mm x 62mm)

## W100: 1<sup>5</sup>/<sub>8</sub>" x 2<sup>7</sup>/<sub>16</sub>" (41mm x 62mm) - Solid Channel - Pre-Cut Lengths

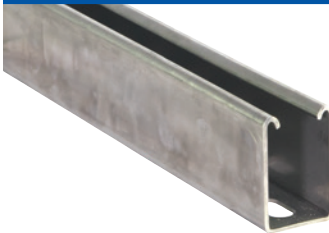


W100 - 1<sup>5</sup>/<sub>8</sub>" x 2<sup>7</sup>/<sub>16</sub>" - 12 Gauge Solid Channel

Pre-Cut Length	Pre-Galvanized Steel - PG	Stainless Steel Type 304 - S4	Stainless Steel Type 316 - S6
6" (15.2cm)	W100PG6IN	W100S46IN	W100S66IN
12" (0.31m)	W100PG12IN	W100S412IN	W100S612IN
18" (0.45m)	W100PG18IN	W100S418IN	W100S618IN
24" (0.61m)	W100PG24IN	W100S424IN	W100S624IN
30" (0.76m)	W100PG30IN	W100S430IN	W100S630IN
36" (0.91m)	W100PG36IN	W100S436IN	W100S636IN
42" (1.07m)	W100PG42IN	W100S442IN	W100S642IN
48" (1.22m)	W100PG48IN	W100S448IN	W100S648IN
54" (1.37m)	W100PG54IN	W100S454IN	W100S654IN
60" (1.52m)	W100PG60IN	W100S460IN	W100S660IN
72" (1.83m)	W100PG72IN	W100S472IN	W100S672IN
80" (2.03m)	W100PG80IN	W100S480IN	W100S680IN
96" (2.44m)	W100PG96IN	W100S496IN	W100S696IN
10' (3.05m)	W100PG10	W100S410	W100S610
20' (6.10m)	W100PG20	W100S420	W100S620

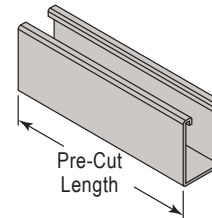
Note: Minimum order quantity is 100 pieces for any size under 10'.

## W100EH: 1<sup>5</sup>/<sub>8</sub>" x 2<sup>7</sup>/<sub>16</sub>" (41mm x 62mm) - Channel with Short Slots - Pre-Cut Lengths



### Channel With Short Slots

9/16" x 1-1/8" (14mm x 29mm) slots  
are punched on 2" (51mm) centers.



W100EH - 1<sup>5</sup>/<sub>8</sub>" x 2<sup>7</sup>/<sub>16</sub>" - 12 Gauge - Channel with Short Slots

Pre-Cut Length	Pre-Galvanized Steel - PG	Stainless Steel Type 304 - S4	Stainless Steel Type 316 - S6
6" (15.2cm)	W100EHPG6IN	W100EHS46IN	W100EHS66IN
12" (0.31m)	W100EHPG12IN	W100EHS412IN	W100EHS612IN
18" (0.45m)	W100EHPG18IN	W100EHS418IN	W100EHS618IN
24" (0.61m)	W100EHPG24IN	W100EHS424IN	W100EHS624IN
30" (0.76m)	W100EHPG30IN	W100EHS430IN	W100EHS630IN
36" (0.91m)	W100EHPG36IN	W100EHS436IN	W100EHS636IN
42" (1.07m)	W100EHPG42IN	W100EHS442IN	W100EHS642IN
48" (1.22m)	W100EHPG48IN	W100EHS448IN	W100EHS648IN
54" (1.37m)	W100EHPG54IN	W100EHS454IN	W100EHS654IN
60" (1.52m)	W100EHPG60IN	W100EHS460IN	W100EHS660IN
72" (1.83m)	W100EHPG72IN	W100EHS472IN	W100EHS672IN
80" (2.03m)	W100EHPG80IN	W100EHS480IN	W100EHS680IN
96" (2.44m)	W100EHPG96IN	W100EHS496IN	W100EHS696IN
10' (3.05m)	W100EHPG10	W100EHS410	W100EHS610
20' (6.10m)	W100EHPG20	W100EHS420	W100EHS620

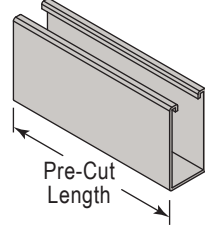
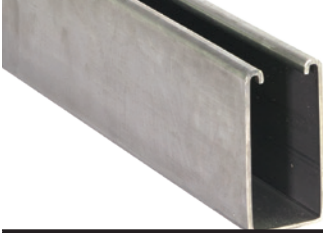
Note: Minimum order quantity is 100 pieces for any size under 10'.

Refer to Engineering Catalog for Beam & Column Loading Data of Solid, Back-to-Back, and Punched Channels

# W150 Pre-Cut Channel

12 Gauge - 1<sup>5</sup>/<sub>8</sub>" x 3<sup>1</sup>/<sub>4</sub>" (41mm x 83mm)

## W150: 1<sup>5</sup>/<sub>8</sub>" x 3<sup>1</sup>/<sub>4</sub>" (41mm x 83mm) - Solid Channel - Pre-Cut Lengths

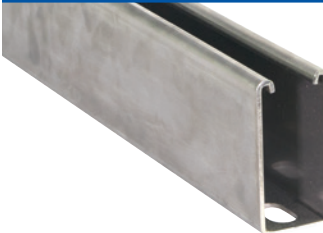


W150 - 1<sup>5</sup>/<sub>8</sub>" x 3<sup>1</sup>/<sub>4</sub>" - 12 Gauge Solid Channel

Pre-Cut Length	Pre-Galvanized Steel - PG	Stainless Steel Type 304 - S4	Stainless Steel Type 316 - S6
6" (15.2cm)	W150PG6IN	W150S46IN	W150S66IN
12" (0.31m)	W150PG12IN	W150S412IN	W150S612IN
18" (0.45m)	W150PG18IN	W150S418IN	W150S618IN
24" (0.61m)	W150PG24IN	W150S424IN	W150S624IN
30" (0.76m)	W150PG30IN	W150S430IN	W150S630IN
36" (0.91m)	W150PG36IN	W150S436IN	W150S636IN
42" (1.07m)	W150PG42IN	W150S442IN	W150S642IN
48" (1.22m)	W150PG48IN	W150S448IN	W150S648IN
54" (1.37m)	W150PG54IN	W150S454IN	W150S654IN
60" (1.52m)	W150PG60IN	W150S460IN	W150S660IN
72" (1.83m)	W150PG72IN	W150S472IN	W150S672IN
80" (2.03m)	W150PG80IN	W150S480IN	W150S680IN
96" (2.44m)	W150PG96IN	W150S496IN	W150S696IN
10' (3.05m)	W150PG10	W150S410	W150S610
20' (6.10m)	W150PG20	W150S420	W150S620

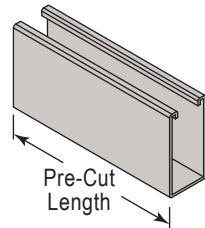
Note: Minimum order quantity is 100 pieces for any size under 10'.

## W150EH: 1<sup>5</sup>/<sub>8</sub>" x 3<sup>1</sup>/<sub>4</sub>" (41mm x 83mm) - Channel with Short Slots - Pre-Cut Lengths



### Channel With Short Slots

<sup>9</sup>/<sub>16</sub>" x 1-<sup>1</sup>/<sub>8</sub>" (14mm x 29mm) slots  
are punched on 2" (51mm) centers.



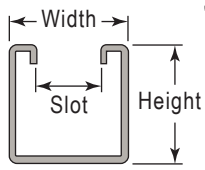
W150EH - 1<sup>5</sup>/<sub>8</sub>" x 3<sup>1</sup>/<sub>4</sub>" - 12 Gauge - Channel with Short Slots

Pre-Cut Length	Pre-Galvanized Steel - PG	Stainless Steel Type 304 - S4	Stainless Steel Type 316 - S6
6" (15.2cm)	W150EHPG6IN	W150EHS46IN	W150EHS66IN
12" (0.31m)	W150EHPG12IN	W150EHS412IN	W150EHS612IN
18" (0.45m)	W150EHPG18IN	W150EHS418IN	W150EHS618IN
24" (0.61m)	W150EHPG24IN	W150EHS424IN	W150EHS624IN
30" (0.76m)	W150EHPG30IN	W150EHS430IN	W150EHS630IN
36" (0.91m)	W150EHPG36IN	W150EHS436IN	W150EHS636IN
42" (1.07m)	W150EHPG42IN	W150EHS442IN	W150EHS642IN
48" (1.22m)	W150EHPG48IN	W150EHS448IN	W150EHS648IN
54" (1.37m)	W150EHPG54IN	W150EHS454IN	W150EHS654IN
60" (1.52m)	W150EHPG60IN	W150EHS460IN	W150EHS660IN
72" (1.83m)	W150EHPG72IN	W150EHS472IN	W150EHS672IN
80" (2.03m)	W150EHPG80IN	W150EHS480IN	W150EHS680IN
96" (2.44m)	W150EHPG96IN	W150EHS496IN	W150EHS696IN
10' (3.05m)	W150EHPG10	W150EHS410	W150EHS610
20' (6.10m)	W150EHPG20	W150EHS420	W150EHS620

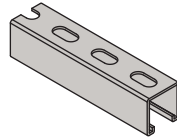
Note: Minimum order quantity is 100 pieces for any size under 10'.

Refer to Engineering Catalog for Beam & Column Loading Data of Solid, Back-to-Back, and Punched Channels

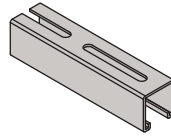
# Wesanco® Channel Selection Chart



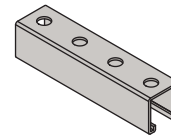
"EH" - Channel With Short Slots



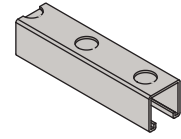
"SL" - Channel With Long Slots



"H" - Channel With Holes



"KO" - Channel With Knock-Outs



Channel	Channel Dimensions				Steel Gauge	Hole Patterns				Finish						Special Metals				
	Style	Width	Height	Slot Width		EH	SL	H	KO	PG	EG	HG	GR	PL	Gold	S4	S6	EA		
W100		1 5/8" (41mm)	2 7/16" (62mm)	7/8" (22mm)	12	◆	◆	◆	◆	■	-	■	■	■	■	■	■	-		
W101			4 7/8" (124mm)			◆	◆	◆	◆	■	-	■	■	■	■	■	■	■	■	-
W150			3 1/4" (83mm)			◆	◆	◆	◆	■	-	■	■	■	■	■	■	■	■	-
W151			6 1/2" (165mm)			◆	◆	◆	◆	■	-	■	■	■	■	■	■	■	■	-
W200			1 5/8" (41mm)			◆	◆	◆	◆	■	-	■	■	■	■	■	■	■	■	■
W201			3 1/4" (83mm)			◆	◆	◆	◆	■	-	■	■	■	■	■	■	■	■	■
W210			1 5/8" (41mm)			◆	◆	◆	◆	■	-	■	■	■	■	■	■	■	■	-
W211			3 1/4" (83mm)			◆	◆	◆	◆	■	-	■	■	■	■	■	■	■	■	-
W300			1 3/8" (35mm)			◆	◆	◆	◆	■	-	■	■	■	■	■	■	■	■	-
W301			2 3/4" (70mm)			◆	◆	◆	◆	■	-	■	■	■	■	■	■	■	■	-
W400			1 3/16" (21mm)			◆	◆	◆	◆	■	-	■	■	■	■	■	■	■	■	-
W401			1 5/8" (41mm)			◆	◆	◆	◆	■	-	■	■	■	■	■	■	■	■	-
W500			1 3/16" (21mm)			◆	◆	◆	◆	■	-	■	■	■	■	■	■	■	■	■
W501			1 5/8" (41mm)			◆	◆	◆	◆	■	-	■	■	■	■	■	■	■	■	■
W600			1 3/16" (21mm)			-	-	-	-	-	-	■	■	■	■	■	■	■	■	-
W601			1 5/8" (41mm)			-	-	-	-	-	-	■	■	■	■	■	■	■	■	-
W700		1 3/32" (10mm)	-	-	-	-	-	-	■	■	■	■	■	■	■	■	-			
W701		1 3/16" (21mm)	-	-	-	-	-	-	■	■	■	■	■	■	■	■	-			
W800		1" (25mm)	◆	◆	◆	◆	◆	◆	■	-	■	■	■	■	■	■	■	-		
W801		2" (51mm)	◆	◆	◆	◆	◆	◆	■	-	■	■	■	■	■	■	■	-		
W900		7/8" (23mm)	◆	◆	◆	◆	◆	◆	■	-	■	■	■	■	■	■	■	-		
W901		1 3/4" (44mm)	◆	◆	◆	◆	◆	◆	■	-	■	■	■	■	■	■	■	-		

◆ Pierced Available

For finish and material specifications see our Engineering Catalog

PG - Pre-Galvanized • EG - Electro-Galvanized • HG - Hot Dip Galvanized • GR - Paint-Green Powder Coating • PL - Uncoated Steel  
 GOLD - Yellow Zinc Dichromate S4 - Stainless Steel Type 304 • S6 - Stainless Steel Type 316 • EA - Extruded Aluminum

