

# METAL FRAMING

COMPLETE LINE OF SUPPORTS & COMPONENTS

## CUSH-A-NATOR®



- Standard Temp. Range -50°F to 275°F
- High Temp. Range -65°F to 340°F
- High Intensity Temp. Range -65°F to 400°F
- Fastest for Installation and Rework
- Best product for RetroFit
- Cushion Rotates into Place on Existing Pipe

## CUSH-A-BLOCK®



- 75% Faster Strut Install
- Water Flow-through Channels
- Molded-in Visibility Strips
- Easy-grip Embedded Handles
- 100% Recycled Material - LEED Qualified
- Resistant to Freeze and Thaw

## CUSH-A-THERM™



- Prevents Condensation Leaks:  
Saves Ceilings, Walls, Supports
- No Air Gaps, No Energy Transfer
- Maintains Thermal Vapor Barrier
- Self-Extinguishing - ASTM D 635
- Temperature Range: -70°F to 250°F

## SNAP-A-SADDLE PRO™



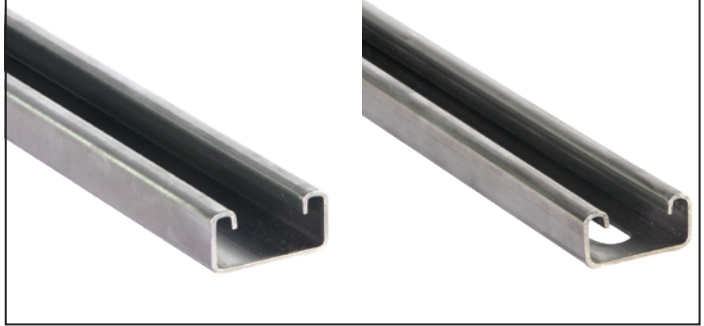
- Prevent Moisture and Mold Damage
- Eliminate Risk of Falling Insulation Supports
- Allow Expansion/Contraction Movements
- Prevents Insulation Tears
- Interior and Exterior Applications
- Keeps Thermal Bridge Intact

**Domestic Rolled Channel In-Stock**

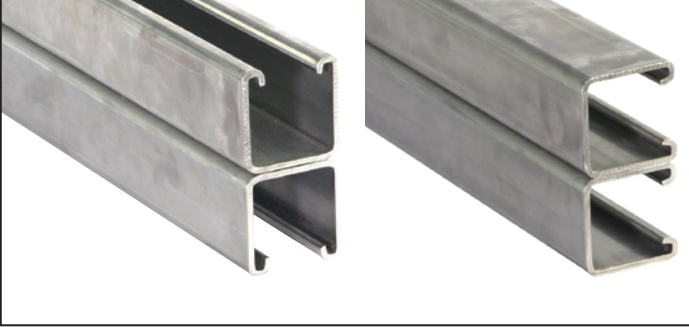
**W200 & W200SS: 1<sup>5</sup>/<sub>8</sub>" x 1<sup>5</sup>/<sub>8</sub>" (41mm x 41mm)**



**W500 & W500SS: 1<sup>5</sup>/<sub>8</sub>" x 1<sup>3</sup>/<sub>16</sub>" (41mm x 21mm)**



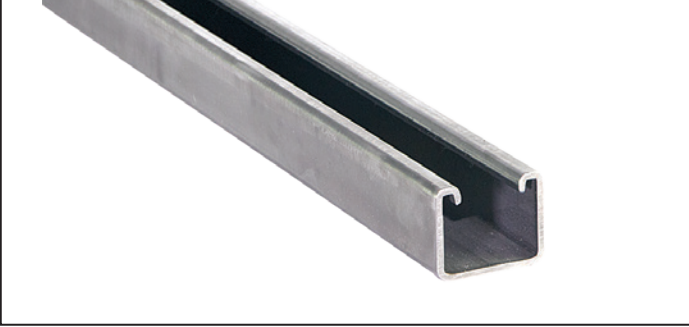
**W201 & W202: 1<sup>5</sup>/<sub>8</sub>" x 3<sup>1</sup>/<sub>4</sub>" (41mm x 83mm)**



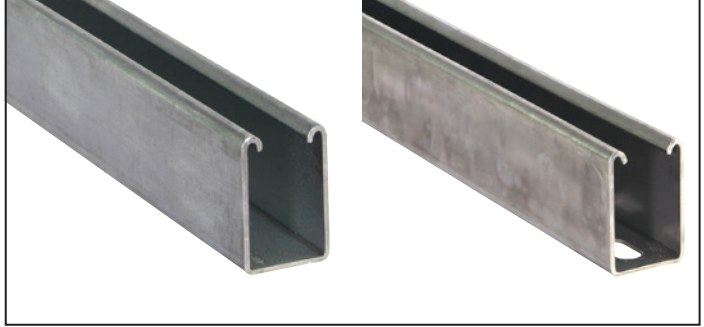
**W501: 1<sup>5</sup>/<sub>8</sub>" x 1<sup>5</sup>/<sub>8</sub>" (41mm x 41mm)**



**W800: 1<sup>5</sup>/<sub>8</sub>" x 1" (41mm x 25mm)**



**W100 & W100SS: 1<sup>5</sup>/<sub>8</sub>" x 2<sup>7</sup>/<sub>16</sub>" (41mm x 62mm)**



**W900 & W900SS: 1<sup>5</sup>/<sub>8</sub>" x 7<sup>7</sup>/<sub>8</sub>" (41mm x 23mm)**



**W150 & W150SS: 1<sup>5</sup>/<sub>8</sub>" x 3<sup>1</sup>/<sub>4</sub>" (41mm x 83mm)**

